



1" GV Food Grade Internal Eccentric Gear Pump



Performance:

Flow rate	0.25 m ³ /h
Pressure	1 - 5 bar
Temperature	0 - 70 °C
Speed	100 d/d
Viscosity	25000 - 250000 SSU

Technical Features:

- ✓ Internal eccentric gear pump
- ✓ 1" threaded connections
- ✓ Food grade model for hygienic food processing installations
- ✓ Designed for low pressure applications
- ✓ Compact design
- ✓ Reliable construction thanks to only two moving parts
- ✓ Various material options
- ✓ Available with jacketed cover and blind cover
- ✓ 230v, three phase 50/60hz motors available
- ✓ Manufactured according to CE regulations

Applications:

- ✓ Hygienic food processing
- ✓ Chocolate, cream and other dairy products
- ✓ Glucose and glycol
- ✓ Vegetable oil, cocoa butter
- ✓ Sugar syrup, nut butters
- ✓ Starch
- ✓ Any transfer of low to medium viscosity fluids with lubricating properties
- ✓ Not suitable for fluids containing abrasive particles

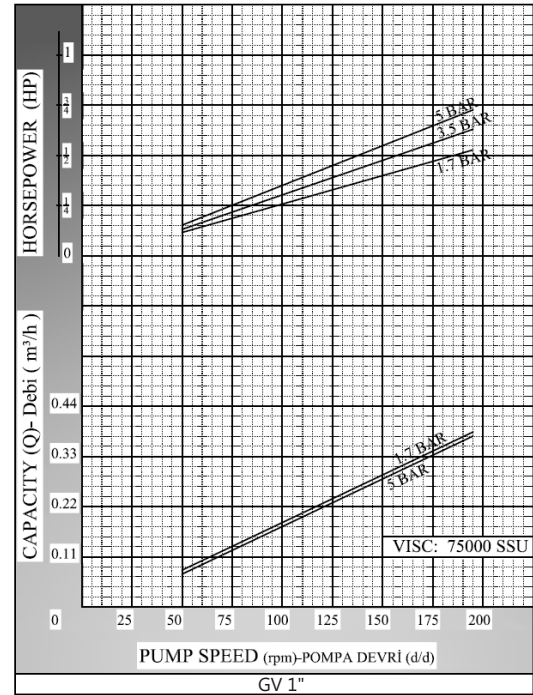
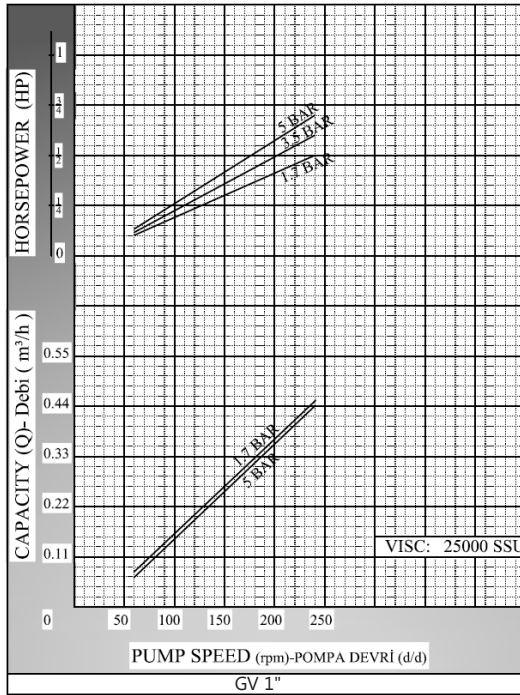
Material Options:

- ✓ Pump body, covers: Cast iron, steel cast, stainless AISI 304/316 CrNi cast
- ✓ Gears: Cast iron, steel cast, stainless AISI 304/316 CrNi cast, Spheroidal cast iron
- ✓ Bearings: Snbz 12 bronze, carbon graphite, silicon carbide, hard metal coated steel
- ✓ Sealing: Lip seal

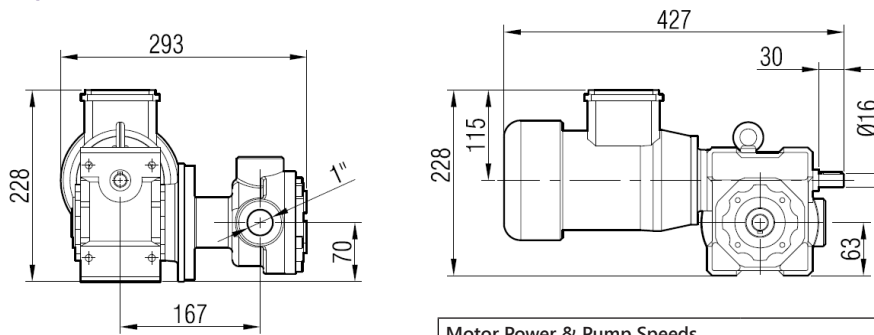
Capacity & Power Table					
Capacity (Q)	Speed (rpm)	Pressure			Viscosity
		2 Bar	3.5 Bar	5 Bar	
0.100	60	0.5 HP	0.5 HP	0.75 HP	75000 SSU
0.150	80	0.5 HP	0.75 HP	1 HP	25000 SSU
0.180	100	0.75 HP	1 HP	1 HP	25000 SSU



Pump Dimensions - Capacity Graphs:

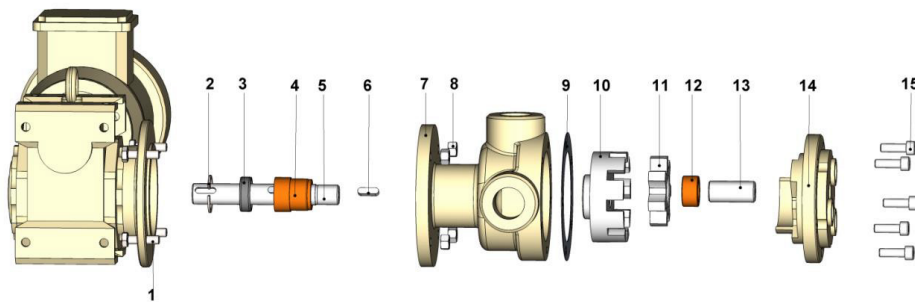


Pump Dimensions -



Motor Power & Pump Speeds			Kg.	
0.75 HP - 1 HP / 0.55 kw - 0.75 kw	27/97 d/d (rpm)	IRSFM52-80M	27	28

Spare Parts List -



No.	Part Name.	Qty.	No.	Part Name.	Qty.
1	Hex Bolt M8x30	4	9	Head Gasket	2
2	Internal Circlip (ø34)	1	10	Rotor	1
3	Lip Seal ø20xø33x10	1	11	Idler	1
4	Bracket Bushing	1	12	Idler Bushing	1
5	Shaft	1	13	Cover Pin	1
6	Cotter 6x6x20 A	1	14	Jacket Cover	1
7	Casing (Pipe Toothed)	1	15	Hex Socket M8x25 For Cover	6
8	Nut M8	4			