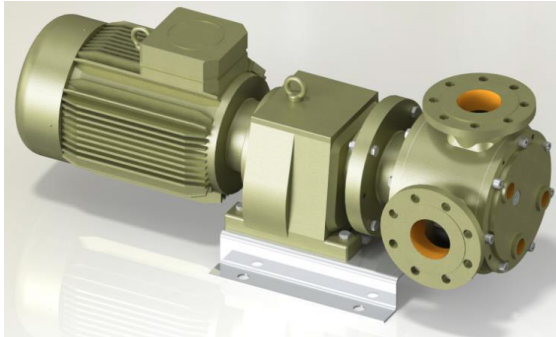




3" GVJ Food Grade Internal Eccentric Gear Pump



Performance:

Flow rate	7 m ³ /h
Pressure	1 - 5 bar
Temperature	0 - 70 °C
Speed	100 d/d
Viscosity	25000 - 250000 SSU

Technical Features:

- ✓ Internal eccentric gear pump
- ✓ 3" flanged connections
- ✓ Food grade model for hygienic food processing installations
- ✓ Designed for low pressure applications
- ✓ Compact design
- ✓ Reliable construction thanks to only two moving parts
- ✓ Various material options
- ✓ Available with jacketed cover and blind cover
- ✓ 230v, three phase 50/60hz motors available
- ✓ Manufactured according to CE regulations

Applications:

- ✓ Hygienic food processing
- ✓ Chocolate, cream and other dairy products
- ✓ Glucose and glycol
- ✓ Vegetable oil, cocoa butter
- ✓ Sugar syrup, nut butters
- ✓ Starch
- ✓ Any transfer of low to medium viscosity fluids with lubricating properties
- ✓ Not suitable for fluids containing abrasive particles

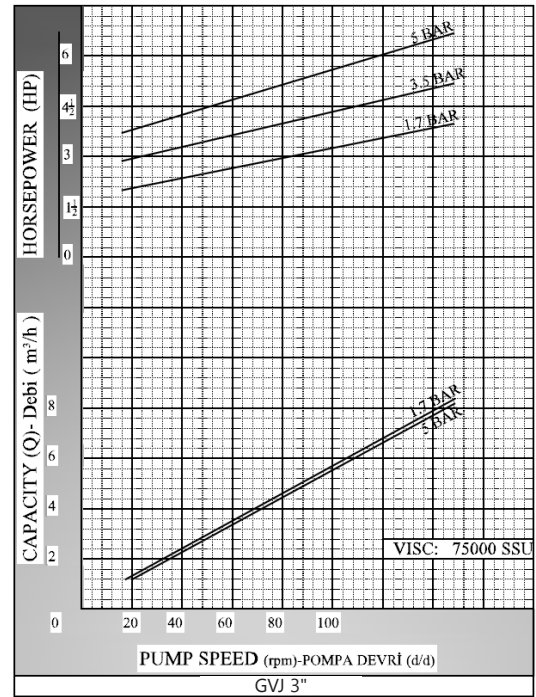
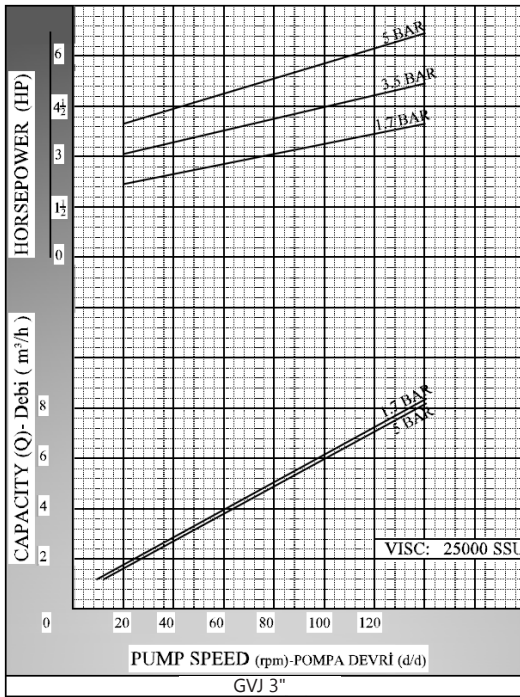
Material Options:

- ✓ Pump body, covers: Cast iron, steel cast, stainless AISI 304/316 CrNi cast
- ✓ Gears: Cast iron, steel cast, stainless AISI 304/316 CrNi cast, Spheroidal cast iron
- ✓ Bearings: Snbz 12 bronze, bearing, carbon graphite, silicon carbide, hard metal coated steel
- ✓ Sealing: Lip seal

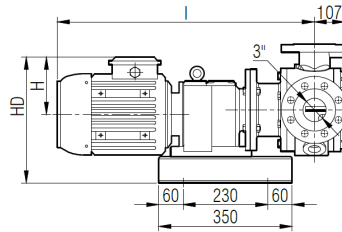
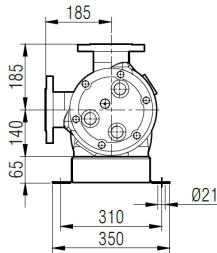
Capacity & Power Table					
Capacity (Q)	Speed (rpm)	Pressure			Viscosity
		2 Bar	3.5 Bar	5 Bar	
4	60	3 HP	4 HP	5.5 HP	75000 SSU
5	80	4 HP	5.5 HP	5.5 HP	25000 SSU
6	100	4 HP	5.5 HP	5.5 HP	25000 SSU



Pump Dimensions - Capacity Graphs:

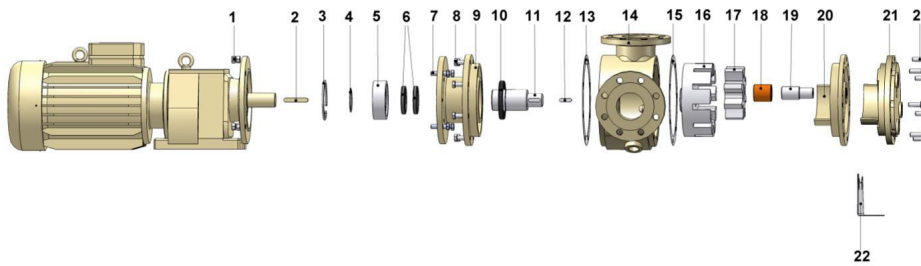


Pump Dimensions -



Motor Power & Pump Speeds		I	HD	H	Kg.	
3 - 4 HP / 2.2 - 3 kw		701	335	141	119	
47/98 d/d (rpm)	IRAFM63/100L	754	338	149	123	126
35/95 d/d (rpm)	IRAFM73/112M				140	
7.5 HP / 5.5 kw		800	371	182	140	
70/95 d/d (rpm)	IRAFM73/132S					

Spare Parts List -



No.	Part Name.	Qty.	No.	Part Name.	Qty.
1	Nut M12	4	13	Casing Gasket	1
2	Gearmotor Key 12x8x70 A	1	14	Casing (Jacketed & w/ Heating Jacket)	1
3	Internal Circlip (ø110)	1	15	Cover Gasket	2
4	External Circlip (ø60)	1	16	Rotor Gear	1
5	Ball Bearing (3212-2RS)	1	17	Idler Gear	1
6	Lip Seal ø60xø80x10	2	18	Idler Bushing	1
7	M12x45	4	19	Cover Pin	1
8	Screw M12x35	8	20	Blind Cover	1
9	Mounting Flange	1	21	Cover (w/ Heating Jacket)	1
10	Lip Seal ø70xø110x13	1	22	Pump Support	1
11	Shaft	1	23	Screw M12x40	7
12	Rotor Gear 10x8x35	1			