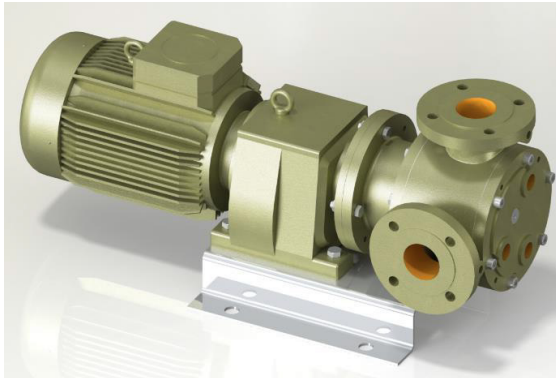




## 2" GVJ Food Grade Internal Eccentric Gear Pump



### Performance:

Flow rate	2.7 m <sup>3</sup> /h
Pressure	1 - 5 bar
Temperature	0 - 70 °C
Speed	100 d/d
Viscosity	25000 - 250000 SSU

### Technical Features:

- ✓ Internal eccentric gear pump
- ✓ 2" flanged connections
- ✓ Food grade model for hygienic food processing installations
- ✓ Designed for low pressure applications
- ✓ Compact design
- ✓ Reliable construction thanks to only two moving parts
- ✓ Various material options
- ✓ Available with jacketed cover and blind cover
- ✓ 230v, three phase 50/60hz motors available
- ✓ Manufactured according to CE regulations

### Applications:

- ✓ Hygienic food processing
- ✓ Chocolate, cream and other dairy products
- ✓ Glucose and glycol
- ✓ Vegetable oil, cocoa butter
- ✓ Sugar syrup, nut butters
- ✓ Starch
- ✓ Any transfer of low to medium viscosity fluids with lubricating properties
- ✓ Not suitable for fluids containing abrasive particles

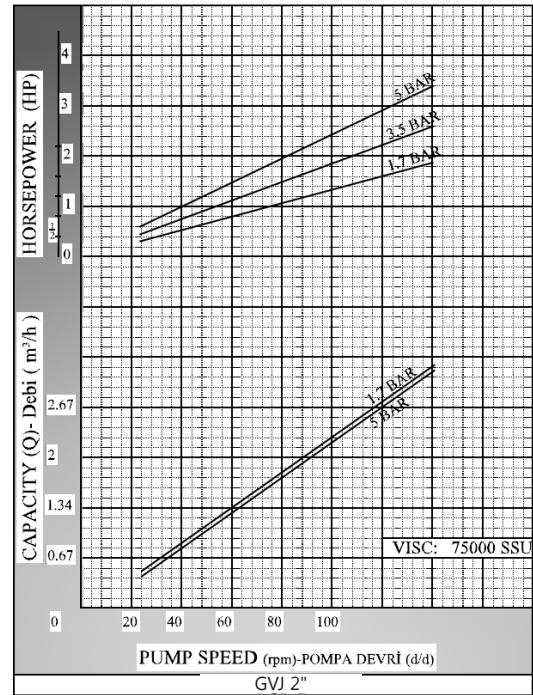
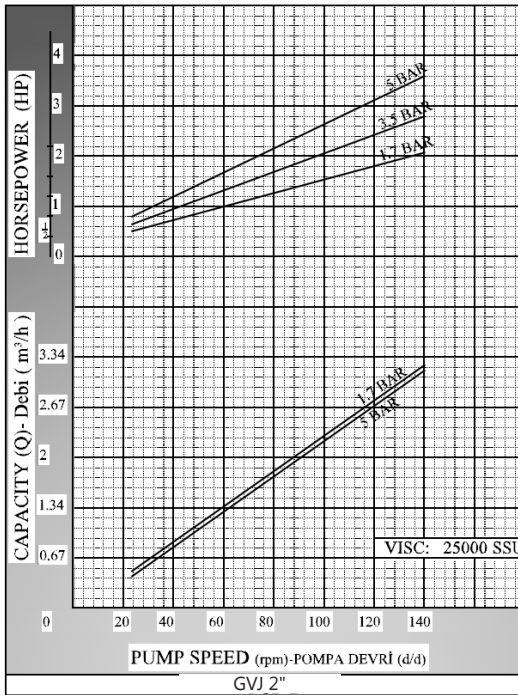
### Material Options:

- ✓ Pump body, covers: Cast iron, steel cast, stainless AISI 304/316 CrNi cast
- ✓ Gears: Cast iron, steel cast, stainless AISI 304/316 CrNi cast, Spheroidal cast iron
- ✓ Bearings: Snbz 12 bronze, bearing, carbon graphite, silicon carbide, hard metal coated steel
- ✓ Sealing: Lip seal

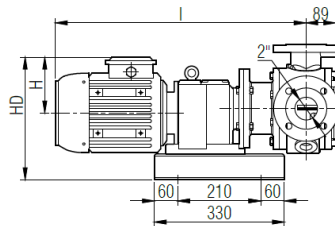
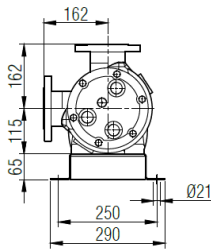
Capacity & Power Table					
Capacity (Q)	Speed (rpm)	Pressure			Viscosity
		2 Bar	3.5 Bar	5 Bar	
1.2	60	1 HP	1.5 HP	2 HP	75000 SSU
1.5	80	1.5 HP	2 HP	3 HP	25000 SSU
2	100	1.5 HP	2 HP	3 HP	25000 SSU



## Pump Dimensions - Capacity Graphs:

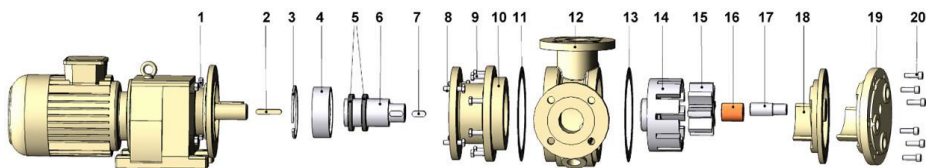


## Pump Dimensions -



Motor Power & Pump Speeds		I	HD	H	Kg.	
1 HP / 0.75 kw	20/55 d/d (rpm) IRAFM63/80	580	287	118	87	
1.5 HP / 1.1 kw	20/77 d/d (rpm) IRAFM63/90S	605	301	132	90	
2 HP / 1.5 kw	30/98 d/d (rpm) IRAFM63/90L	630			92	
3 - 4 HP / 2.2 - 3 kw	47/98 d/d (rpm) IRAFM63/100L	672	310	141	96	99

## Spare Parts List -



No.	Part Name.	Qty.	No.	Part Name.	Qty.
1	Nut M10	4	11	Bracket Gasket	1
2	Gearmotor Key 10x8x56 A	1	12	Casing (Jacketed w/ 90° Flanged Ports)	1
3	Internal Circlip (ø110)	1	13	Cover Gasket	2
4	Ball Bearing (3212-2RS)	1	14	Rotor Gear	1
5	Lip Seal ø60xø80x10	2	15	Idler Gear	1
6	Shaft	1	16	Idler Bushing	1
7	Rotor Key 12x8x30	1	17	Cover Pin	1
8	Hex Screw M10x40	4	18	Blind Cover	1
9	Hex Screw M10x30	8	19	Cover (w/ Heating Jacket)	1
10	Mounting Flange	1	20	Inbus Bolt M10x35	6