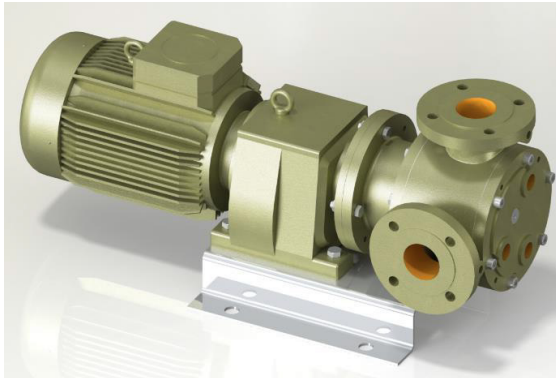




2½" GVJ Food Grade Internal Eccentric Gear Pump



Performance:

Flow rate	6 m ³ /h
Pressure	1 - 5 bar
Temperature	0 - 70 °C
Speed	100 d/d
Viscosity	25000 - 250000 SSU

Technical Features:

- ✓ Internal eccentric gear pump
- ✓ 2½" flanged connections
- ✓ Food grade model for hygienic food processing installations
- ✓ Designed for low pressure applications
- ✓ Compact design
- ✓ Reliable construction thanks to only two moving parts
- ✓ Various material options
- ✓ Available with jacketed cover and blind cover
- ✓ 230v, three phase 50/60hz motors available
- ✓ Manufactured according to CE regulations

Applications:

- ✓ Hygienic food processing
- ✓ Chocolate, cream and other dairy products
- ✓ Glucose and glycol
- ✓ Vegetable oil, cocoa butter
- ✓ Sugar syrup, nut butters
- ✓ Starch
- ✓ Any transfer of low to medium viscosity fluids with lubricating properties
- ✓ Not suitable for fluids containing abrasive particles

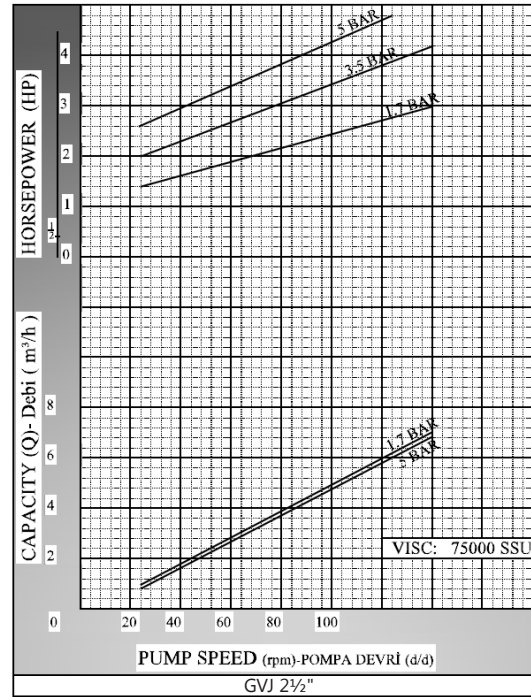
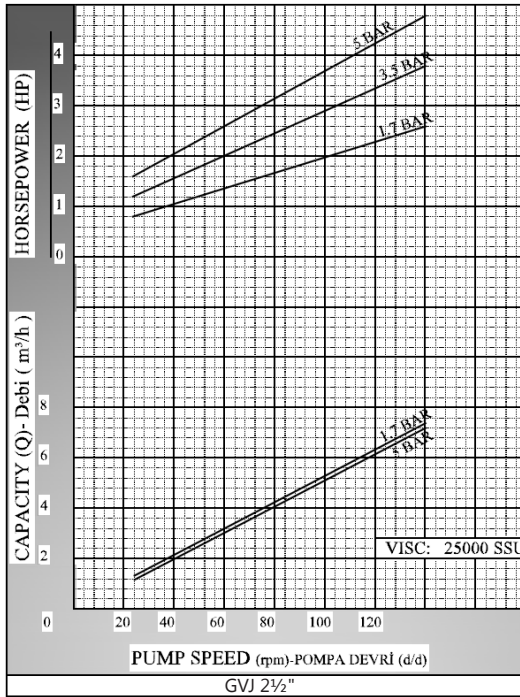
Material Options:

- ✓ Pump body, covers: Cast iron, steel cast, stainless AISI 304/316 CrNi cast
- ✓ Gears: Cast iron, steel cast, stainless AISI 304/316 CrNi cast, Spheroidal cast iron
- ✓ Bearings: Snbz 12 bronze, bearing, carbon graphite, silicon carbide, hard metal coated steel
- ✓ Sealing: Lip seal

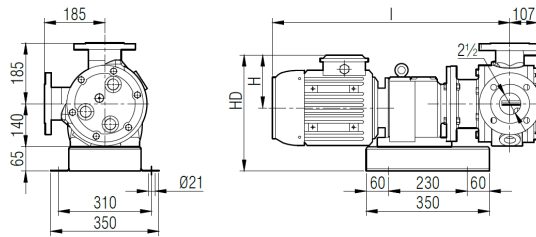
Capacity & Power Table					
Capacity (Q)	Speed (rpm)	Pressure			Viscosity
		2 Bar	3.5 Bar	5 Bar	
3	60	2 HP	2 HP	3 HP	75000 SSU
4	80	2 HP	3 HP	4 HP	25000 SSU
5	100	3 HP	4 HP	5.5 HP	25000 SSU



Pump Dimensions - Capacity Graphs:

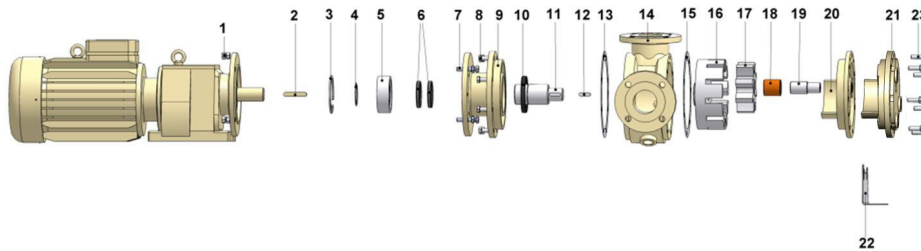


Pump Dimensions -



Motor Power & Pump Speeds		I	HD	H	Kg.	
2 HP / 1.5 kw 30/98 d/d (rpm) IRAFM63/90L		634	326	132	112	
3 - 4 HP / 2.2 - 3 kw 47/98 d/d (rpm) IRAFM63/100L		676	335	141	116	119
2 HP / 1.5 kw 30/98 d/d (rpm) IRAFM63/90L		729	338	149	133	
3 - 4 HP / 2.2 - 3 kw 47/98 d/d (rpm) IRAFM63/100L		775	371	182	146	

Spare Parts List -



No.	Part Name.	Qty.	No.	Part Name.	Qty.
1	Nut M12	4	13	Casing Gasket	1
2	Gearmotor Key 12x8x70 A	1	14	Casing (Jacketed & w/ Heating Jacket)	1
3	Internal Circlip (ø110)	1	15	Cover Gasket	2
4	External Circlip (ø60)	1	16	Rotor Gear	1
5	Ball Bearing (3212-2RS)	1	17	Idler Gear	1
6	Lip Seal ø60xø80x10	2	18	Idler Bushing	1
7	M12x45	4	19	Cover Pin	1
8	Screw M12x35	8	20	Blind Cover	1
9	Mounting Flange	1	21	Cover (w/ Heating Jacket)	1
10	Lip Seal ø70xø110x13	1	22	Pump Support	1
11	Shaft	1	23	Screw M12x40	7
12	Rotor Gear 10x8x35	1			