



1½" GVJ Food Grade Internal Eccentric Gear Pump



Performance:

Flow rate	0.3 m ³ /h
Pressure	1 - 5 bar
Temperature	0 - 70 °C
Speed	100 d/d
Viscosity	25000 - 250000 SSU

Technical Features:

- ✓ Internal eccentric gear pump
- ✓ 1½" flanged connections
- ✓ Food grade model for hygienic food processing installations
- ✓ Designed for low pressure applications
- ✓ Compact design
- ✓ Reliable construction thanks to only two moving parts
- ✓ Various material options
- ✓ Available with jacketed cover and blind cover
- ✓ 230v, three phase 50/60hz motors available
- ✓ Manufactured according to CE regulations

Applications:

- ✓ Hygienic food processing
- ✓ Chocolate, cream and other dairy products
- ✓ Glucose and glycol
- ✓ Vegetable oil, cocoa butter
- ✓ Sugar syrup, nut butters
- ✓ Starch
- ✓ Any transfer of low to medium viscosity fluids with lubricating properties
- ✓ Not suitable for fluids containing abrasive particles

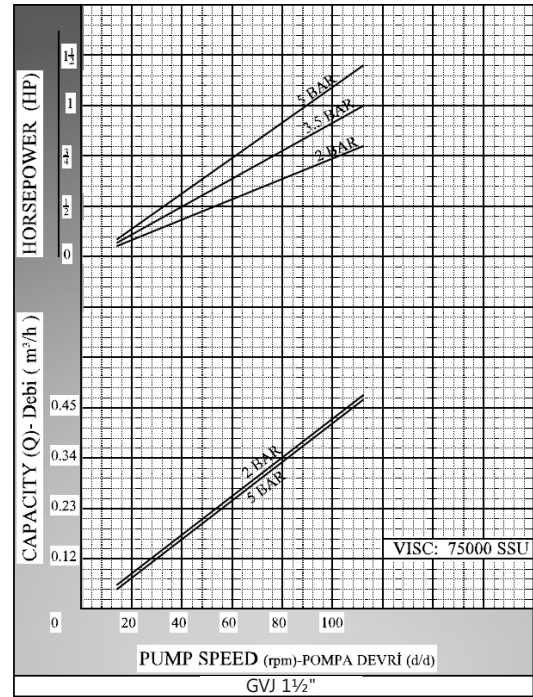
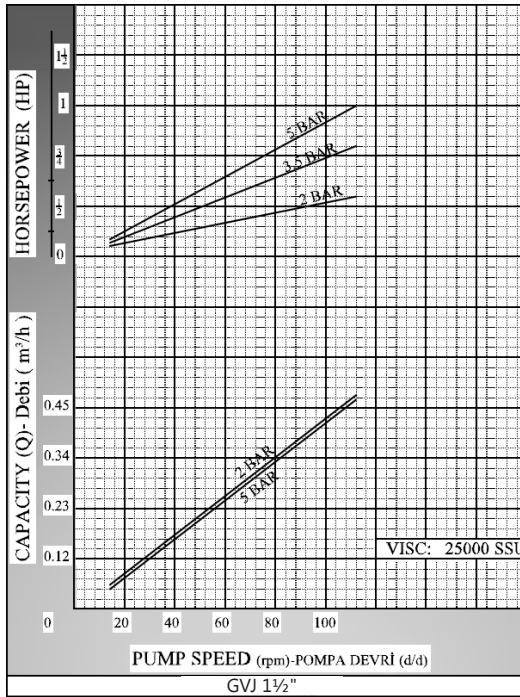
Material Options:

- ✓ Pump body, covers: Cast iron, steel cast, stainless AISI 304/316 CrNi cast
- ✓ Gears: Cast iron, steel cast, stainless AISI 304/316 CrNi cast, Spheroidal cast iron
- ✓ Bearings: Snbz 12 bronze, bearing, carbon graphite, silicon carbide, hard metal coated steel
- ✓ Sealing: Lip seal

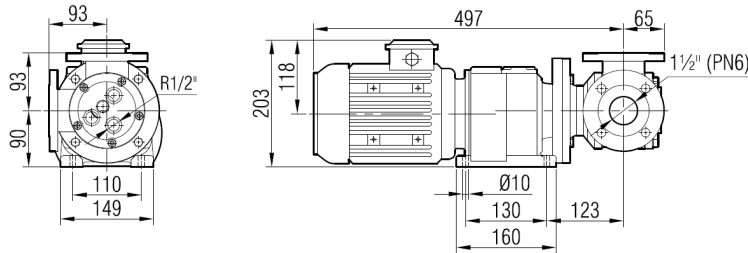
Capacity & Power Table					
Capacity (Q)	Speed (rpm)	Pressure			Viscosity
		2 Bar	3.5 Bar	5 Bar	
0.200	60	0.5 HP	0.5 HP	0.75 HP	75000 SSU
0.250	80	0.5 HP	0.75 HP	1 HP	25000 SSU
0.300	100	0.75 HP	1 HP	1.5 HP	25000 SSU



Pump Dimensions - Capacity Graphs:

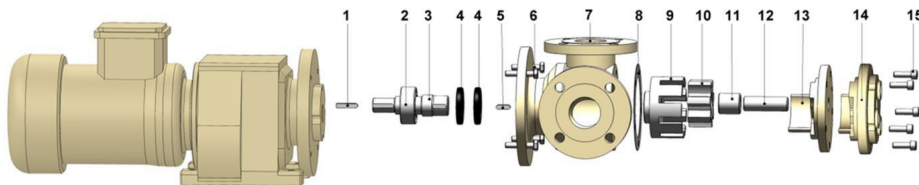


Pump Dimensions -



Motor Power & Pump Speeds			Kg.	
0.75 HP - 1 HP / 0.55 kw - 0.75 kw	30/100 d/d (rpm)	IRAFM53-80	35	37

Spare Parts List -



No.	Part Name.	Qty.	No.	Part Name.	Qty.
1	Gearmotor Key 6x6x30 AB	1	9	Rotor Gear	1
2	Ball Bearing (3205-2RS)	1	10	Idler Gear	1
3	Shaft	1	11	Idler Bushing	1
4	Lip Seal $\phi 30 \times \phi 52 \times 10$	2	12	Cover Pin	1
5	Rotor Key 6x6x20 A	1	13	Blind Cover	1
6	Hex Bolt M8x30	4	14	Cover (w/ Heating Jacket)	1
7	Casing (w/ 90° Flanged Ports)	1	15	Inbus Bolt M8x30	5
8	Cover Gasket	2			