



1½" GT Internal Eccentric Gear Pump



Performance:

Flow rate	5.5 m ³ /h
Pressure	1 - 7 bar
Temperature	0 - 100 °C
Speed	1400 d/d
Viscosity	100 - 75000 SSU

Technical Features:

- ✓ Internal eccentric gear pump
- ✓ 1½" threaded ports
- ✓ Compact design
- ✓ Reliable construction thanks to only two moving parts
- ✓ Various material options
- ✓ Available with external bypass, jacketed and blind cover
- ✓ 230v, three phase 50/60hz motors available
- ✓ Motor and gearbox drive available
- ✓ Manufactured according to CE regulations

Applications:

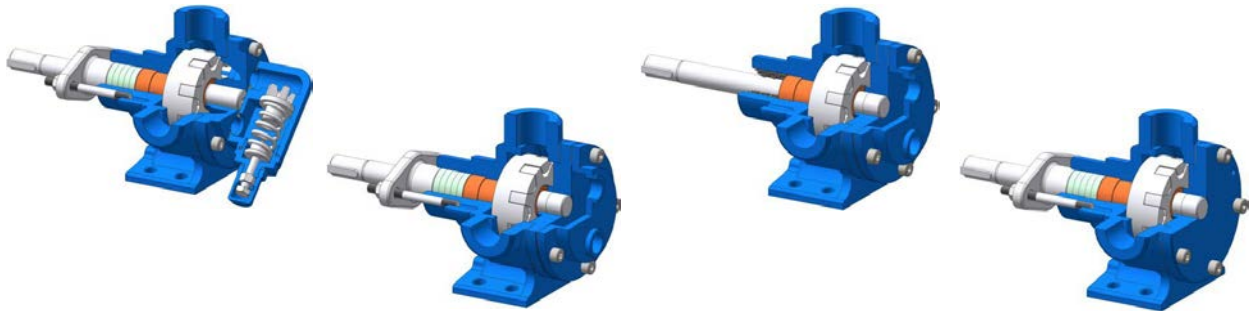
- ✓ Fuel oil, diesel fuel and gas oil transfer
- ✓ Small scale thermal oil applications including Marlotherm, Duratherm, Paratherm, Multitherm, Mobiltherm and Dowtherm
- ✓ Lubrication applications
- ✓ Coolant transfer
- ✓ Any transfer of low to medium viscosity fluids with lubricating properties
- ✓ Not suitable for fluids containing abrasive particles

Material Options:

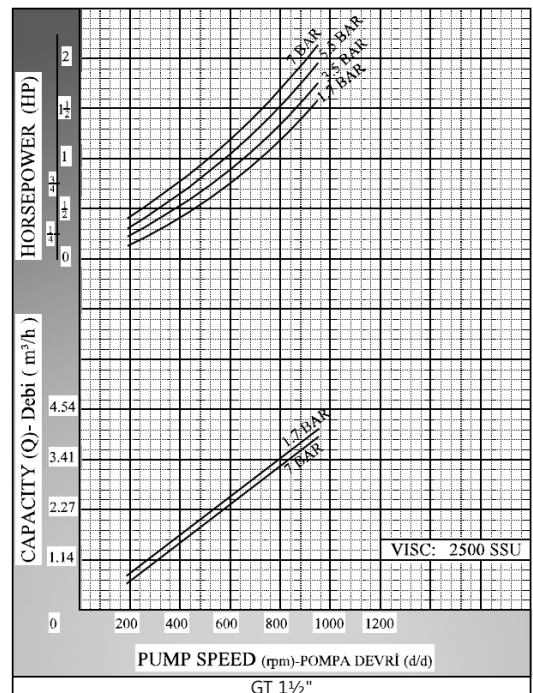
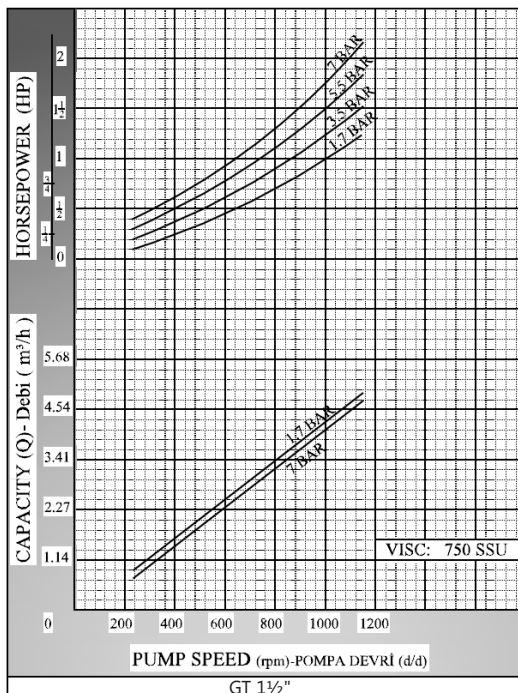
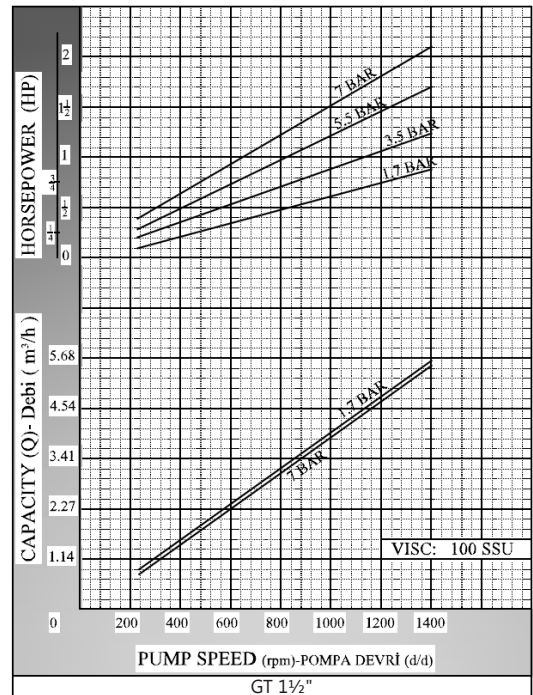
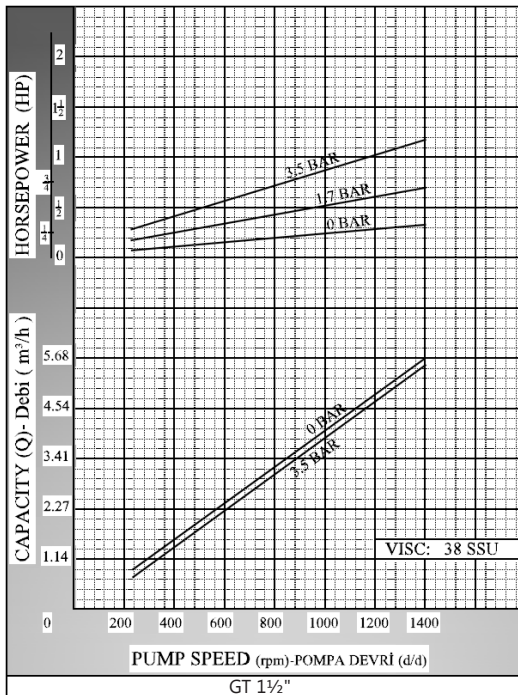
- ✓ Pump body, covers: Cast iron, steel cast, stainless AISI 304/316 cast
- ✓ Gears: Cast iron, steel cast, stainless AISI 304/316 cast, Spheroidal cast iron
- ✓ Bearings: Sbnz 12 bronze, carbon graphite, silicon carbide, hard metal coated steel
- ✓ Sealing: Lip seal

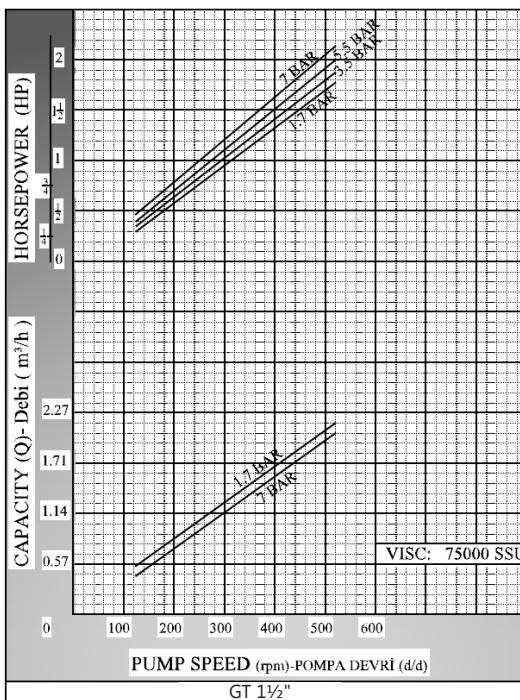
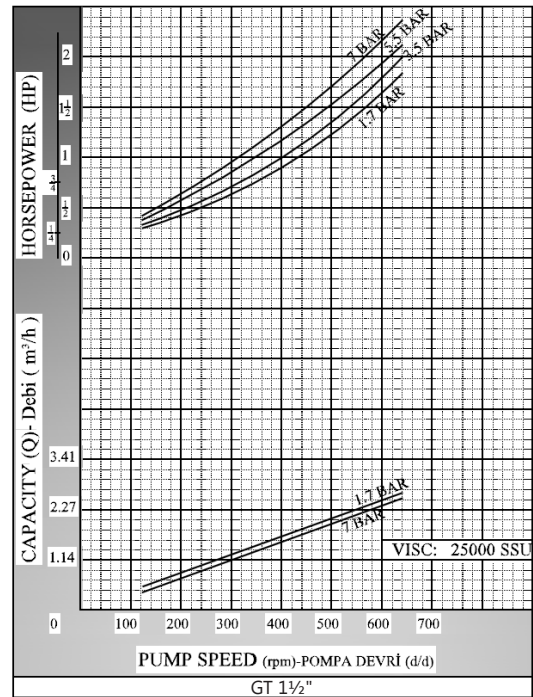
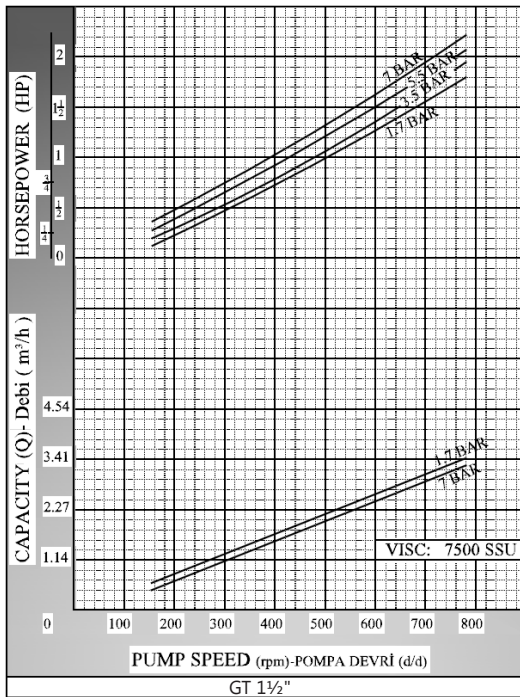
Capacity & Power Table					
Capacity (Q)	Speed (rpm)	Pressure			Viscosity
		2 Bar	5 Bar	7 Bar	
3.5	900	1.5 HP	1.5 HP	2 HP	750 SSU
5.5	1400	1.5 HP	2 HP	3 HP	100 SSU

Motor Powers		Motor Powers	
1.5 HP	900 d/d (rpm)	1.5 HP	750 d/d (rpm)
1.5 HP	1400 d/d (rpm)	2 HP	900 d/d (rpm)
2 HP	1400 d/d (rpm)	3 HP	1400 d/d (rpm)
Motor Body		Motor Body	
90		100	

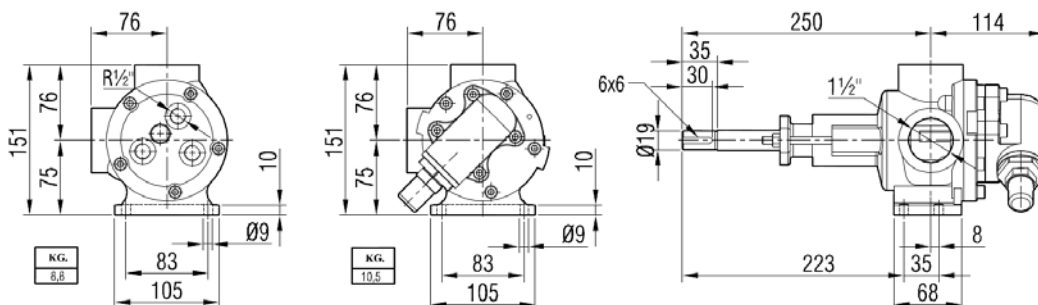


Pump Dimensions - Capacity Graphs:



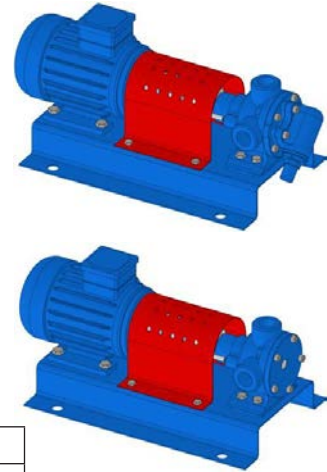
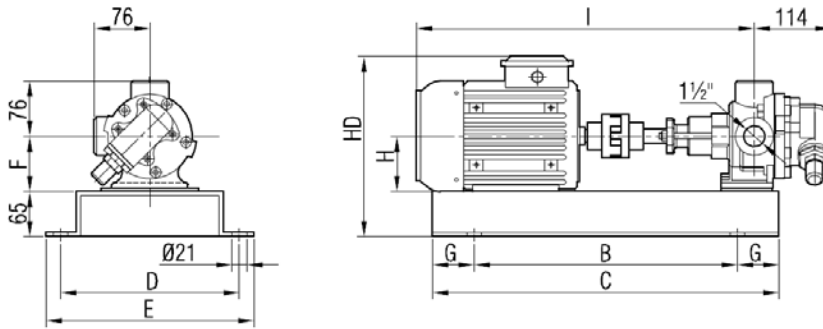


Pump Dimensions:



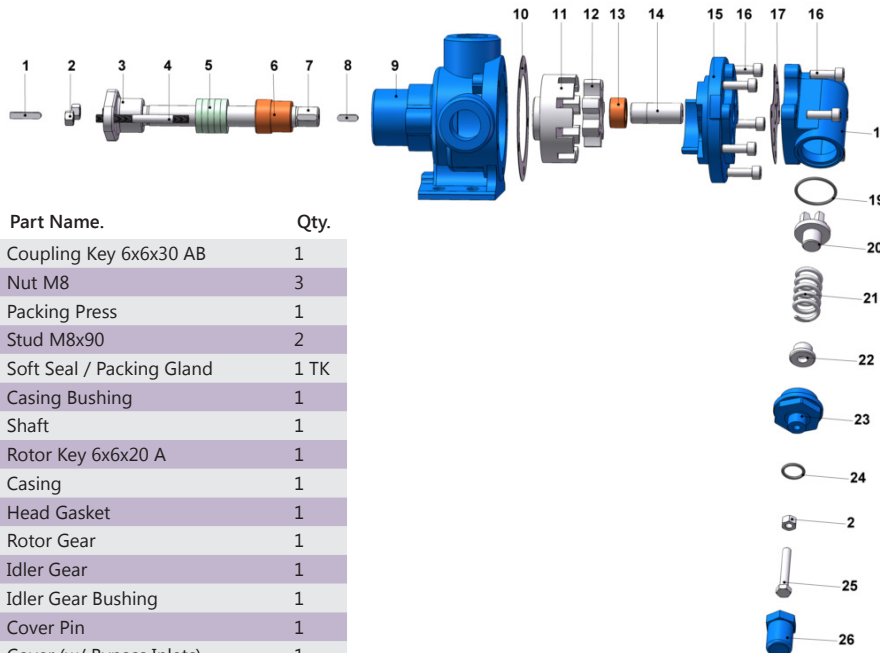


Coupling Dimensions - Motor and gearbox drive:



Motor Power & Speed			I	HD	H	B	C	D	E	F	G	Kg	
1 HP / 0.75 kw	900 d/d (rpm)	MOTOR 90S	578	281	90	430	550	260	300	90	60	34	
1.5 HP / 1.1 kw	1400 d/d (rpm)											36	
1.5 HP / 1.1 kw	900 d/d (rpm)	MOTOR 90L	603	300	100	420	620	310	350	100	100	50	
2 HP / 1.5 kw	1400 d/d (rpm)											48	52
1.5 HP / 1.1 kw	750 d/d (rpm)	MOTOR 100L	645	300	100	420	620	310	350	100	100	56	
2 HP / 1.5 kw	900 d/d (rpm)											57	
3-4 HP / 2.2-3 kw	1400 d/d (rpm)	MOTOR 112M	665	322	112	420	620	310	350	112	100	57	
2 HP / 1.5 kw	750 d/d (rpm)											56	
3 HP / 2.2 kw	900 d/d (rpm)	57											
5.5 HP / 4 kw	1400 d/d (rpm)	57											

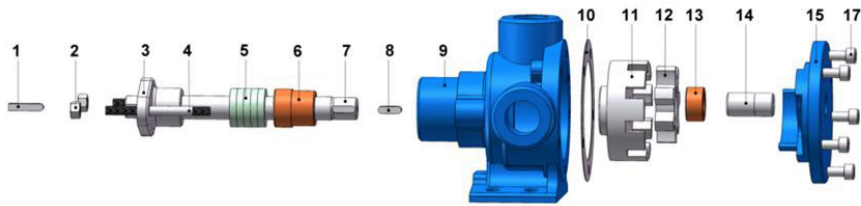
Spare Parts List - Sealed with soft seal, and pressure relief valve on cover:



No.	Part Name.	Qty.
1	Coupling Key 6x6x30 AB	1
2	Nut M8	3
3	Packing Press	1
4	Stud M8x90	2
5	Soft Seal / Packing Gland	1 TK
6	Casing Bushing	1
7	Shaft	1
8	Rotor Key 6x6x20 A	1
9	Casing	1
10	Head Gasket	1
11	Rotor Gear	1
12	Idler Gear	1
13	Idler Gear Bushing	1
14	Cover Pin	1
15	Cover (w/ Bypass Inlets)	1
16	Inbus Bolt M8x25 For Cover	9
17	Bypass Gasket	1
18	Pressure Relief Valve - Bypass	1
19	Bypass O-Ring	1
20	Valve	1
21	Spring	1
22	Washer	1
23	Bypass Cover	1
24	Cap O-Ring	1
25	Adjusting Screw M8x55	1
26	Cap	1



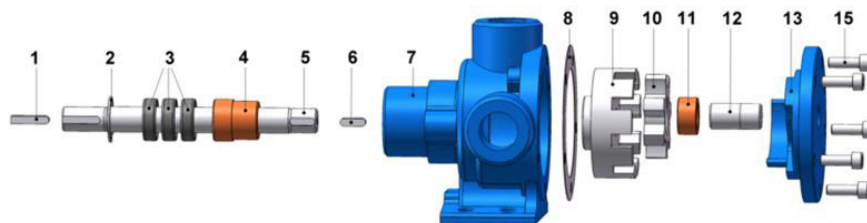
Spare Parts List - Sealed with soft seal, jacketed, and with blind cover:



No.	Part Name.	Qty.
1	Coupling Key 6x6x30 AB	1
2	Nut M8	2
3	Packing Press	1
4	Stud M8x90	2
5	Soft Seal / Packing Gland	1 TK
6	Casing Bushing	1
7	Shaft	1
8	Rotor Key 6x6x20 A	1
9	Casing	1
10	Cover Gasket	2
11	Rotor Gear	1
12	Idler Gear	1
13	Idler Gear Bushing	1
14	Cover Pin	1
15	Blind Cover	1
16	Cover (w/ Heating Jacket)	1
17	Inbus Bolt M8x25 For Blind Cover	5
	Inbus Bolt M8x30 For Cover (w/ Heating Jacket)	5



Spare Parts List - Sealed with lip seal, jacketed, and with blind cover:



No.	Part Name.	Qty.
1	Coupling Key 6x6x30 AB	1
2	Internal Circlip (ø33)	1
3	Lip Seal ø20xø33x10	3
4	Casing Bushing	1
5	Shaft	1
6	Rotor Key 6x6x20 A	1
7	Casing	1
8	Cover Gasket	2
9	Rotor Gear	1
10	Idler Gear	1
11	Idler Gear Bushing	1
12	Cover Pin	1
13	Blind Cover	1
14	Cover (w/ Heating Jacket)	1
15	Inbus Bolt M8x25 For Blind Cover	5
	Inbus Bolt M8x30 For Cover (w/ Heating Jacket)	5

